

MATEC INDUSTRIES®

THE INDUSTRIAL EXCELLENCE IN ITALIAN MACHINERY BY NATURE

CW/R
CONCRETE WASHOUT RECOVERY
CW/R

RECOVERY OF
CONCRETE
WASHING RESIDUE



ADVANTAGES OF A MATEC PLANT



EFFICIENCY IN SOLID SEPARATION

- High filtration quality
- Reduction of solid waste



RECOVERY AND REUSE OF MATERIALS

- Recovery of clean water
- Recovery of solid materials



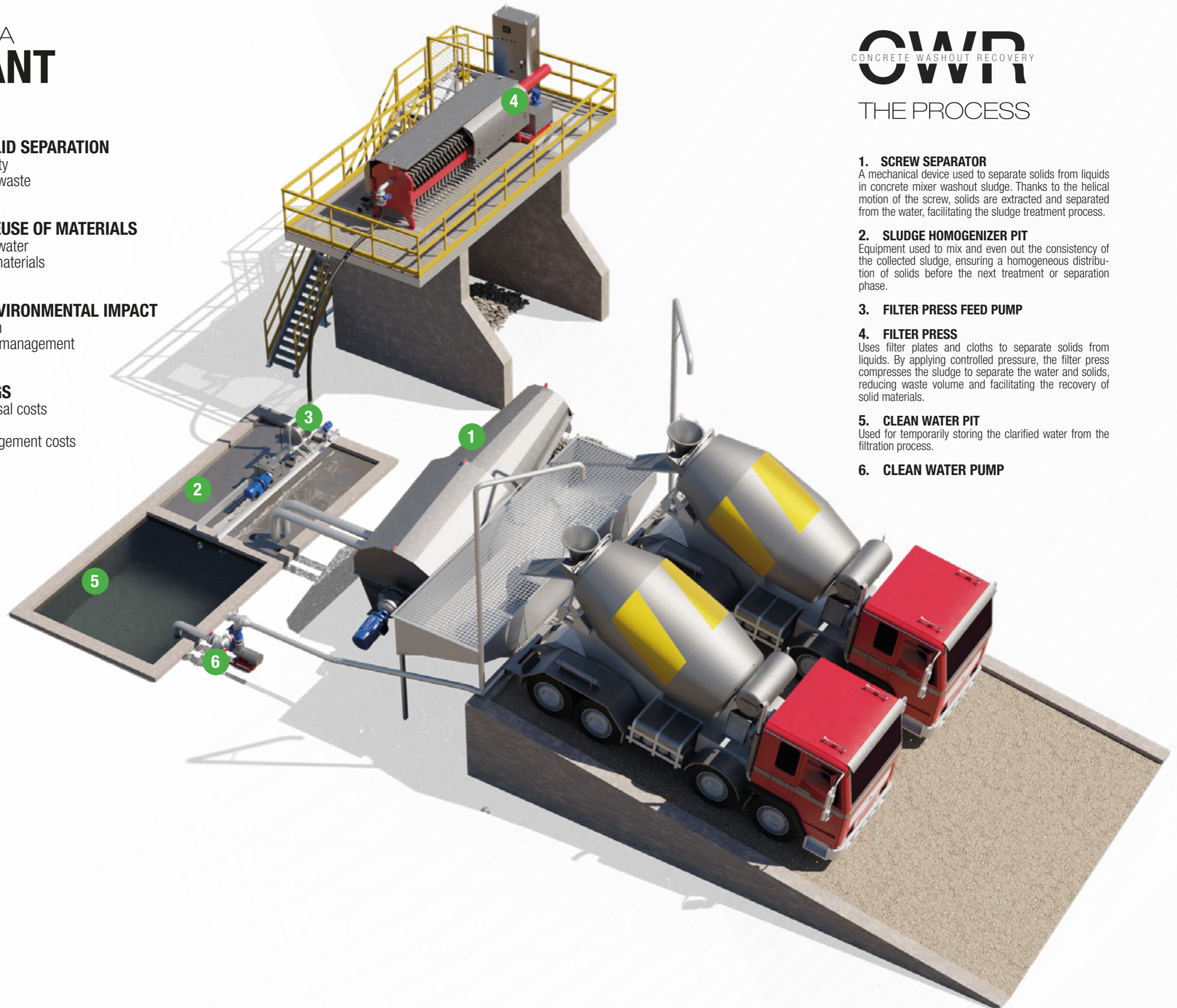
REDUCTION OF ENVIRONMENTAL IMPACT

- Less contamination
- Sustainable waste management



ECONOMIC SAVINGS

- Reduction in disposal costs
- Water savings
- Reduction in management costs



CWR
CONCRETE WASHOUT RECOVERY

THE PROCESS

1. SCREW SEPARATOR

A mechanical device used to separate solids from liquids in concrete mixer washout sludge. Thanks to the helical motion of the screw, solids are extracted and separated from the water, facilitating the sludge treatment process.

2. SLUDGE HOMOGENIZER PIT

Equipment used to mix and even out the consistency of the collected sludge, ensuring a homogeneous distribution of solids before the next treatment or separation phase.

3. FILTER PRESS FEED PUMP

4. FILTER PRESS

Uses filter plates and cloths to separate solids from liquids. By applying controlled pressure, the filter press compresses the sludge to separate the water and solids, reducing waste volume and facilitating the recovery of solid materials.

5. CLEAN WATER PIT

Used for temporarily storing the clarified water from the filtration process.

6. CLEAN WATER PUMP

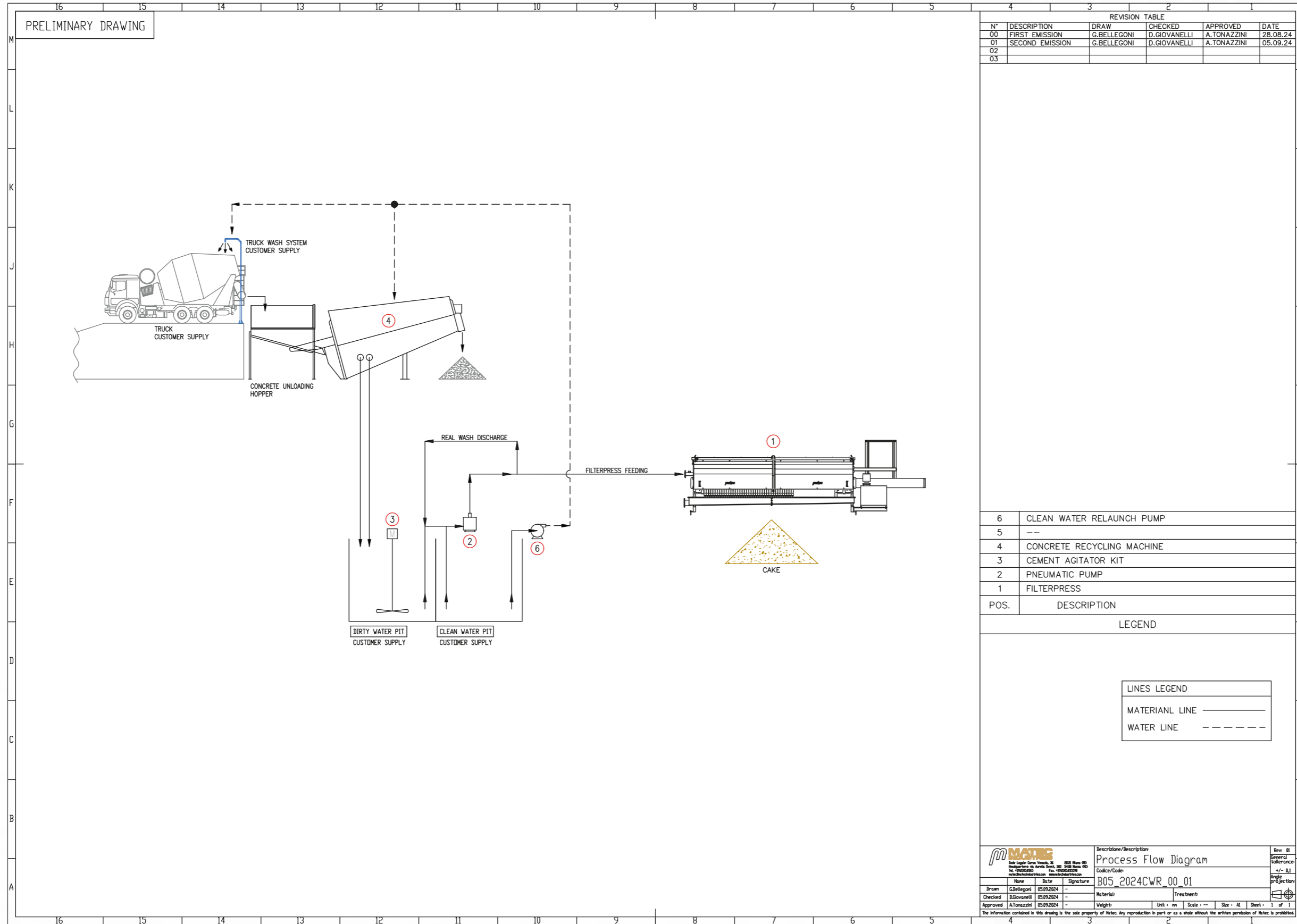
WATCH THE VIDEO



FOLLOW US



MATECINDUSTRIES.COM



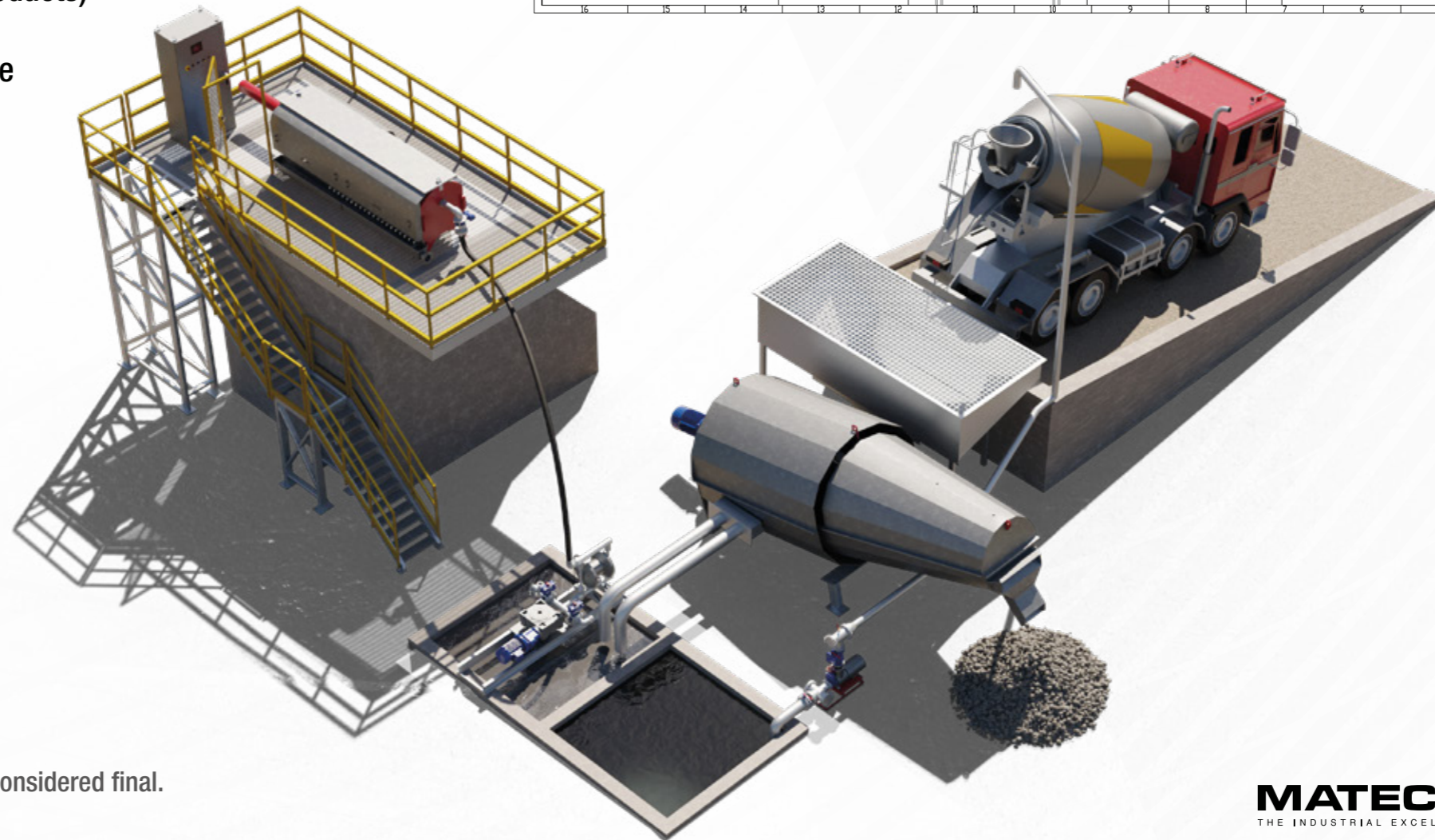
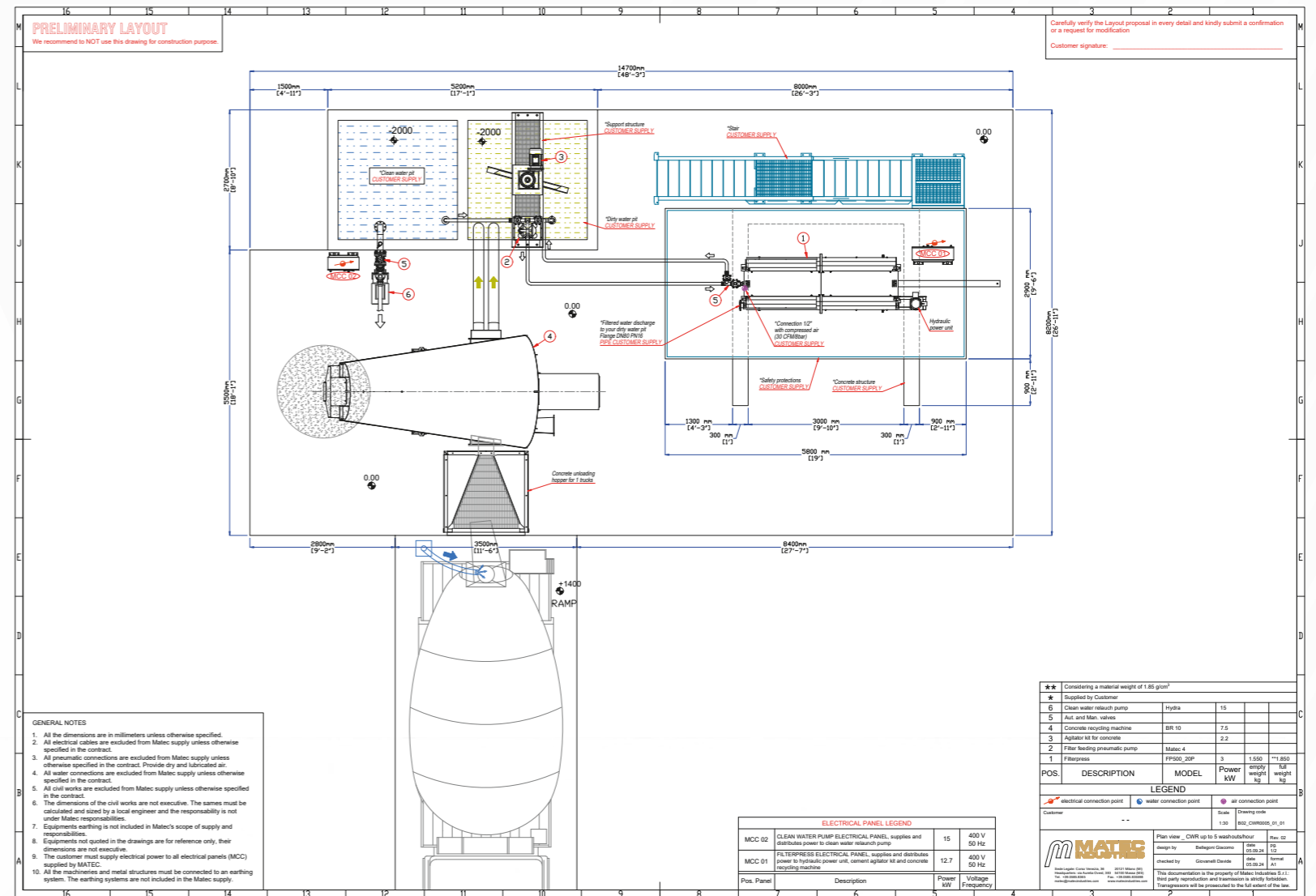
LAYOUT 01

UP TO 5 WASHOUTS/HOUR

- Hopper 1 TRUCK (length 1.5 m)
- Concrete reclaimer model BR10
- Inground concrete pit for slurry with cement agitator kit
- Filter feeding pneumatic pump M4
- Filter Press 500x500 20 plates
 - Real Wash - Automatic washing system for concrete
- Inground concrete pit for clean water with relaunch pump

OPTIONAL

- Slurry homogenizing tank (AISI 304)
- Clean water tank (AISI 304 / PVC)
- PH Control kit
- Screen for Sand/gravel separation
- Conveyor belts (sand/gravel products)
- Air compressor
- Filter press supporting structure with walkway, handrailing and access ladder



This is a preliminary rendering and should not be considered final.

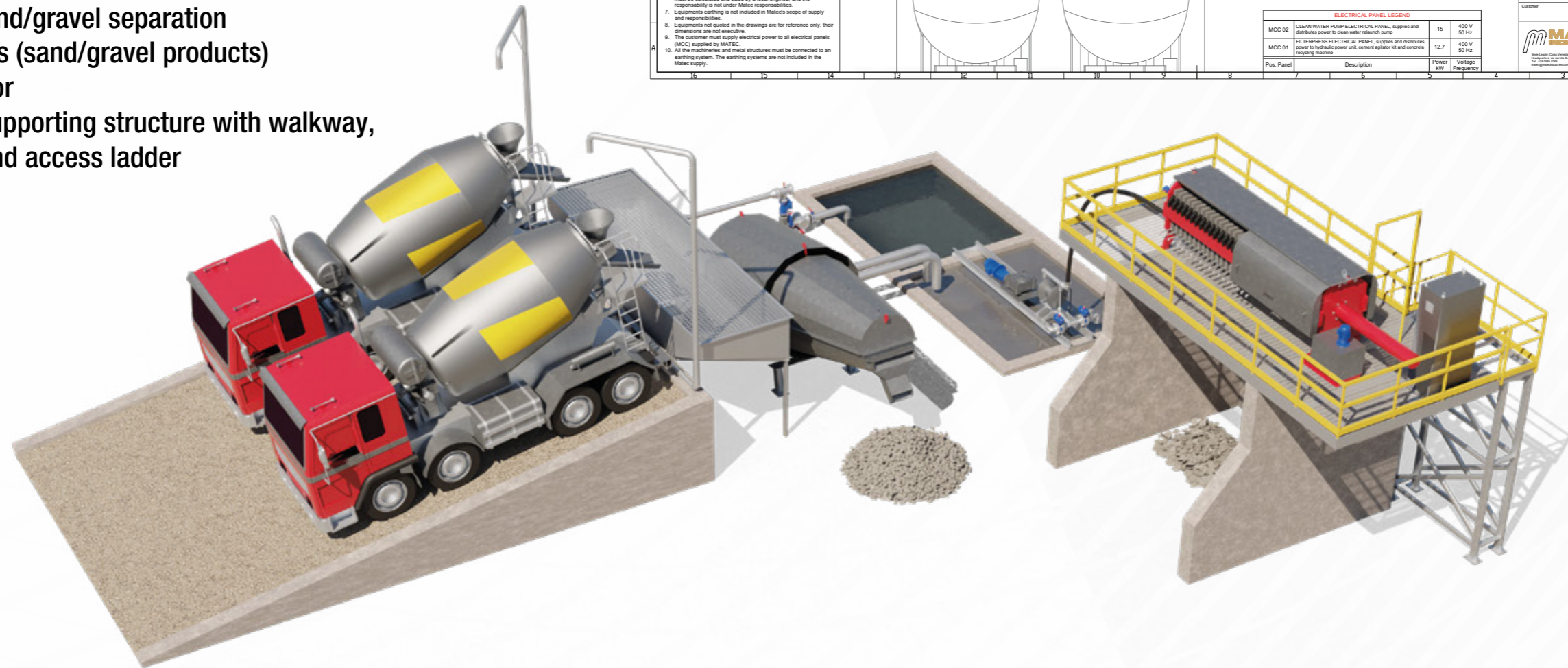
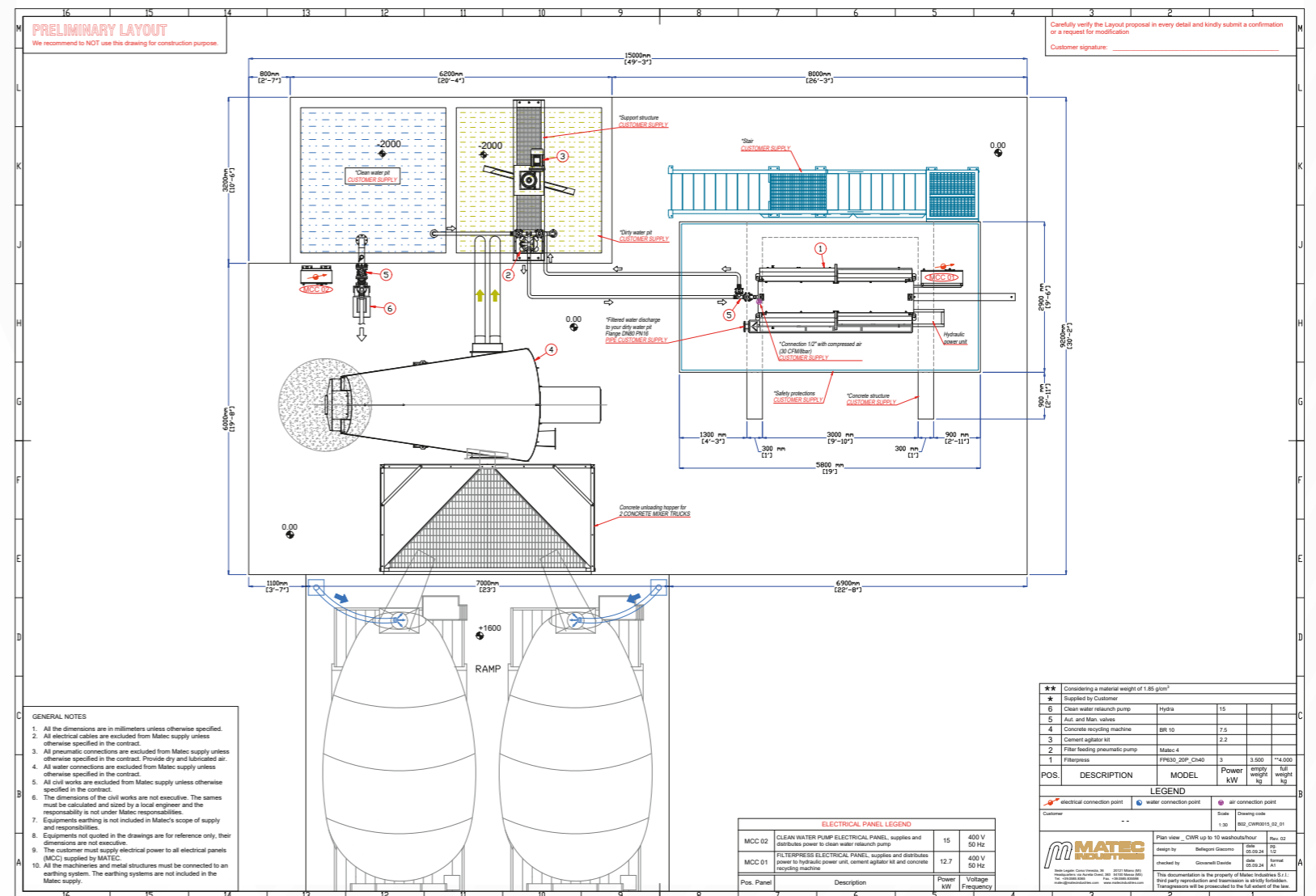
LAYOUT 02

UP TO 10 WASHOUTS/HOUR

- Hopper 2 TRUCKS (length 4 m)
- Concrete reclaimer model BR10
- Inground concrete pit for slurry with cement agitator kit
- Filter feeding pneumatic pump M4
- Filter Press 630x630 20 plates
 - Real Wash - Automatic washing system for concrete
- Inground concrete pit for clean water with relaunch pump

OPTIONAL

- Slurry homogenizing tank (AISI 304)
- Clean water tank (AISI 304 / PVC)
- PH Control kit
- Screen for Sand/gravel separation
- Conveyor belts (sand/gravel products)
- Air compressor
- Filter press supporting structure with walkway, handrailing and access ladder



This is a preliminary rendering and should not be considered final.

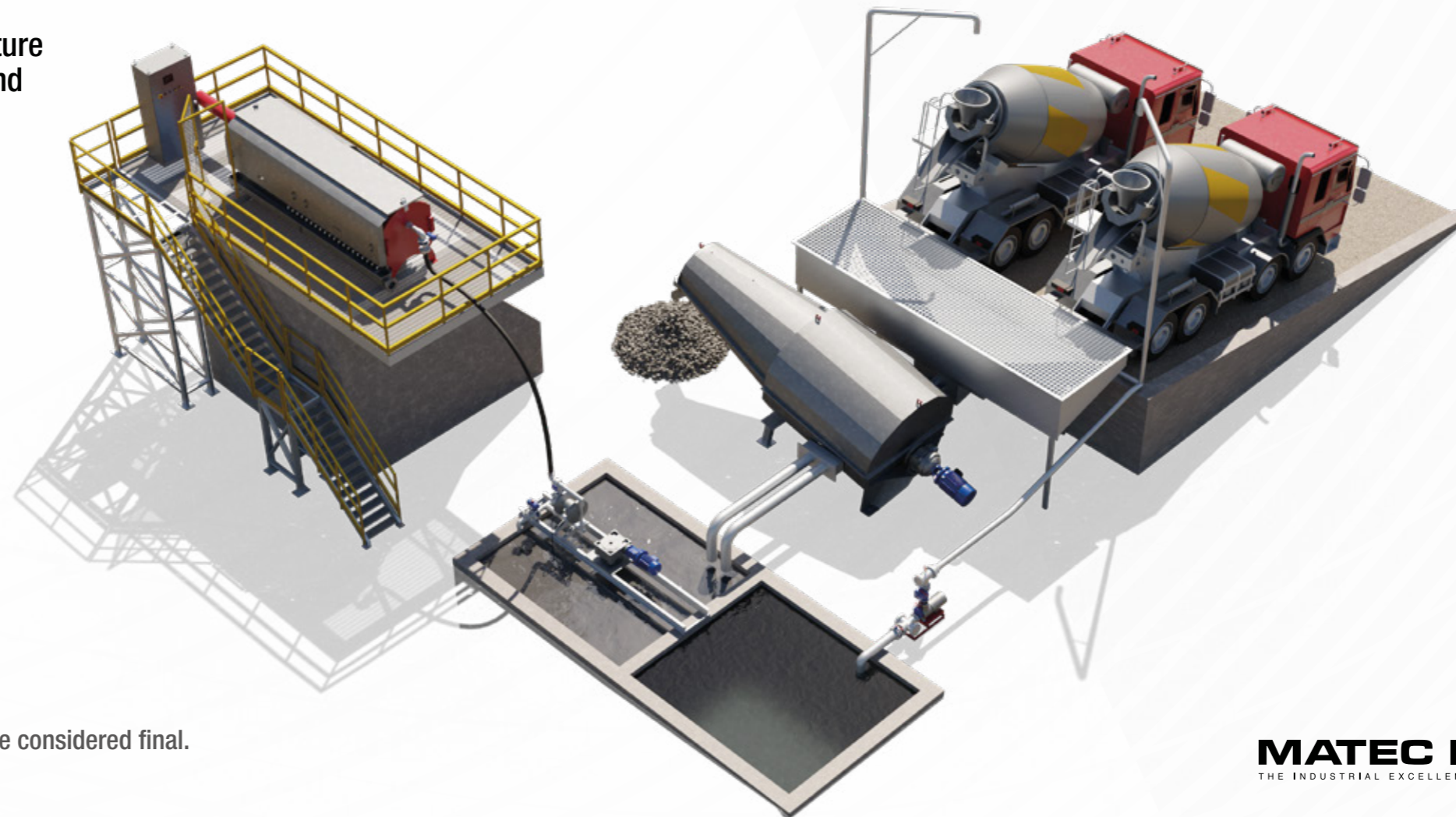
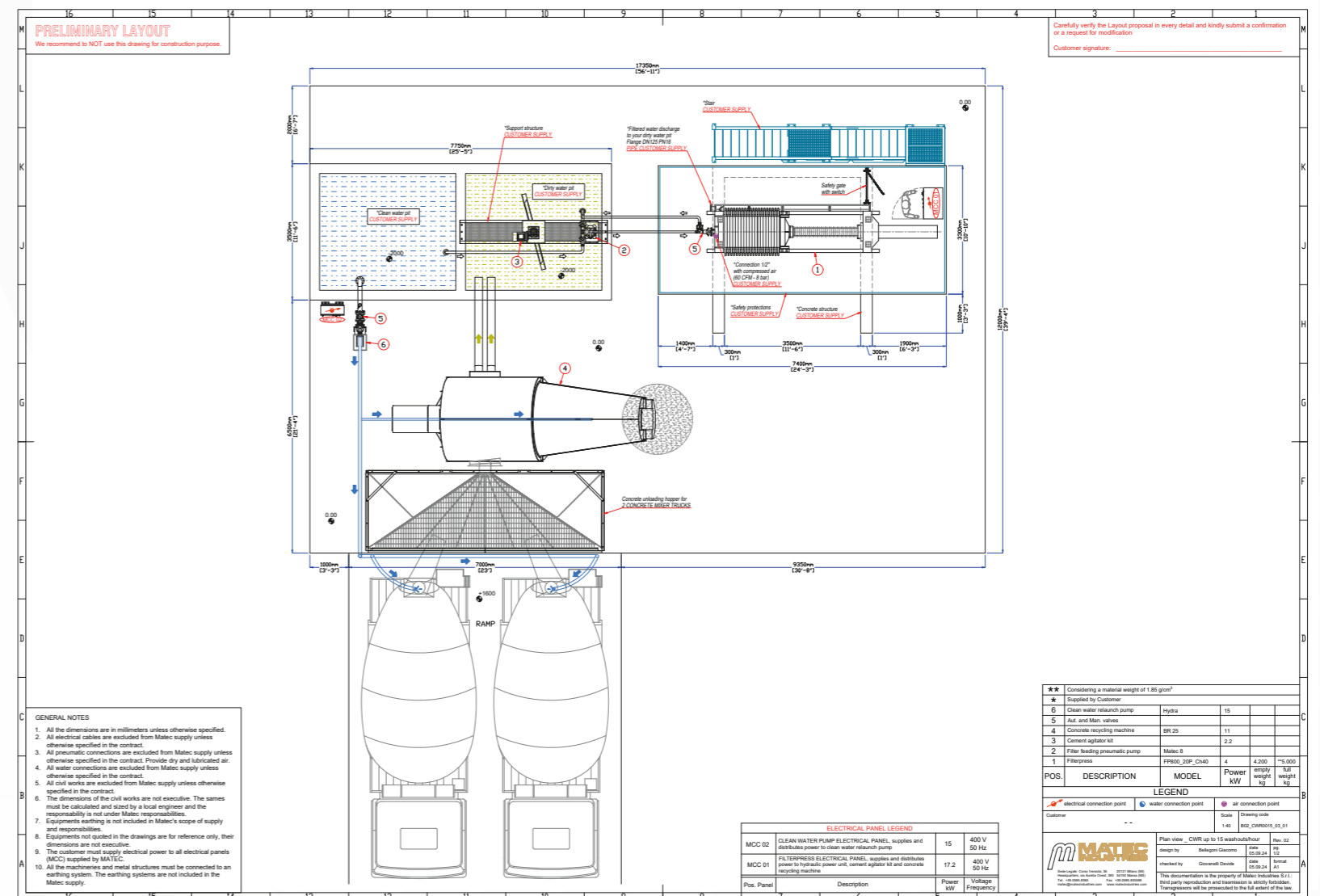
LAYOUT 03

UP TO 15 WASHOUTS/HOUR

- Hopper 2 TRUCKS (length 6 m)
- Concrete reclaimer model BR 25
- Inground concrete pit for slurry with cement agitator kit
- Filter feeding pneumatic pump M8
- Filter Press 800x800 20 plates
- Real wash - Automatic washing system for concrete
- Inground concrete pit for clean water with relaunch pump

OPTIONAL

- Slurry homogenizing tank (AISI 304)
- Clean water tank (AISI 304 / PVC)
- PH Control kit
- Screen for Sand/gravel separation
- Conveyor belts (sand/gravel products)
- Air compressor
- Filter press supporting structure with walkway, handrailing and access ladder



This is a preliminary rendering and should not be considered final.

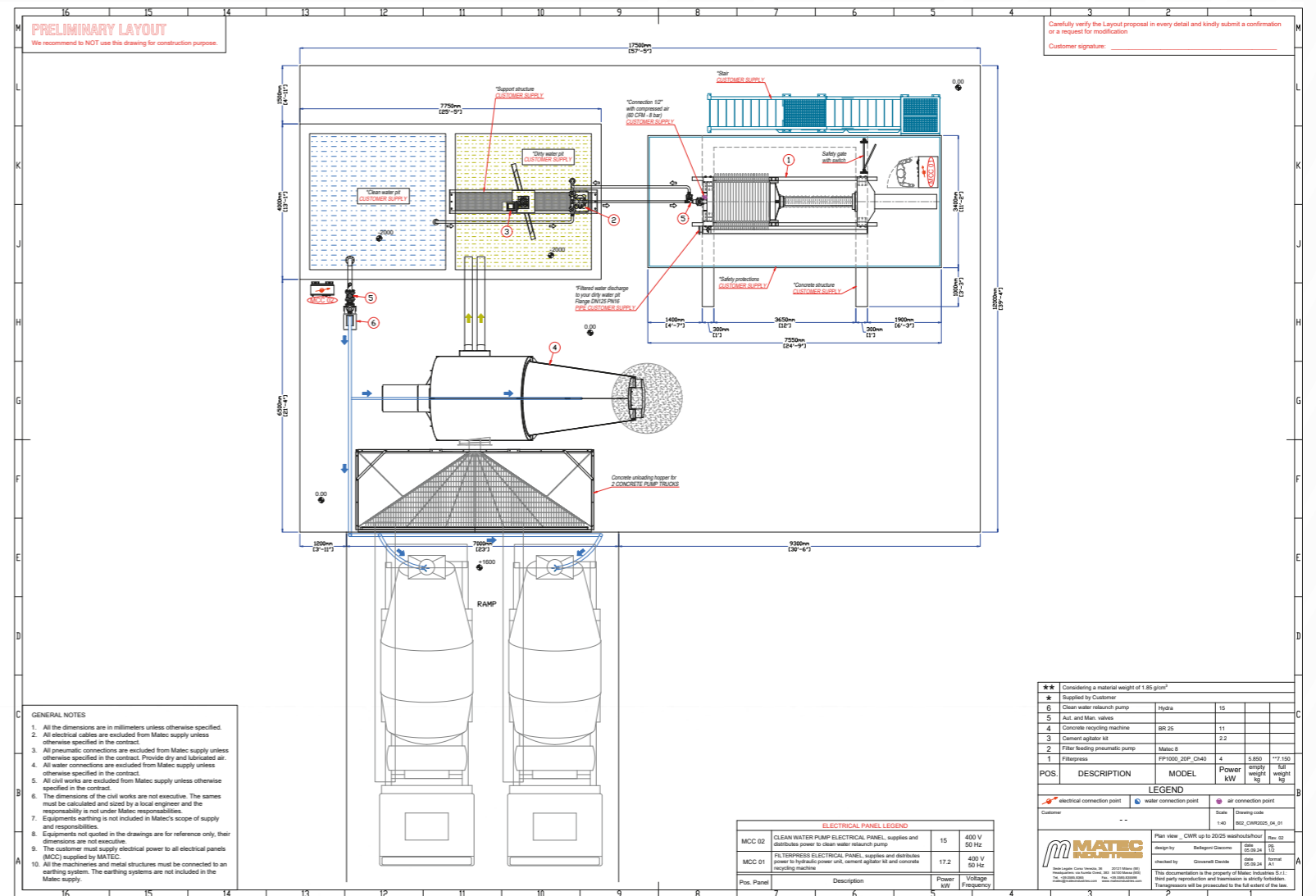
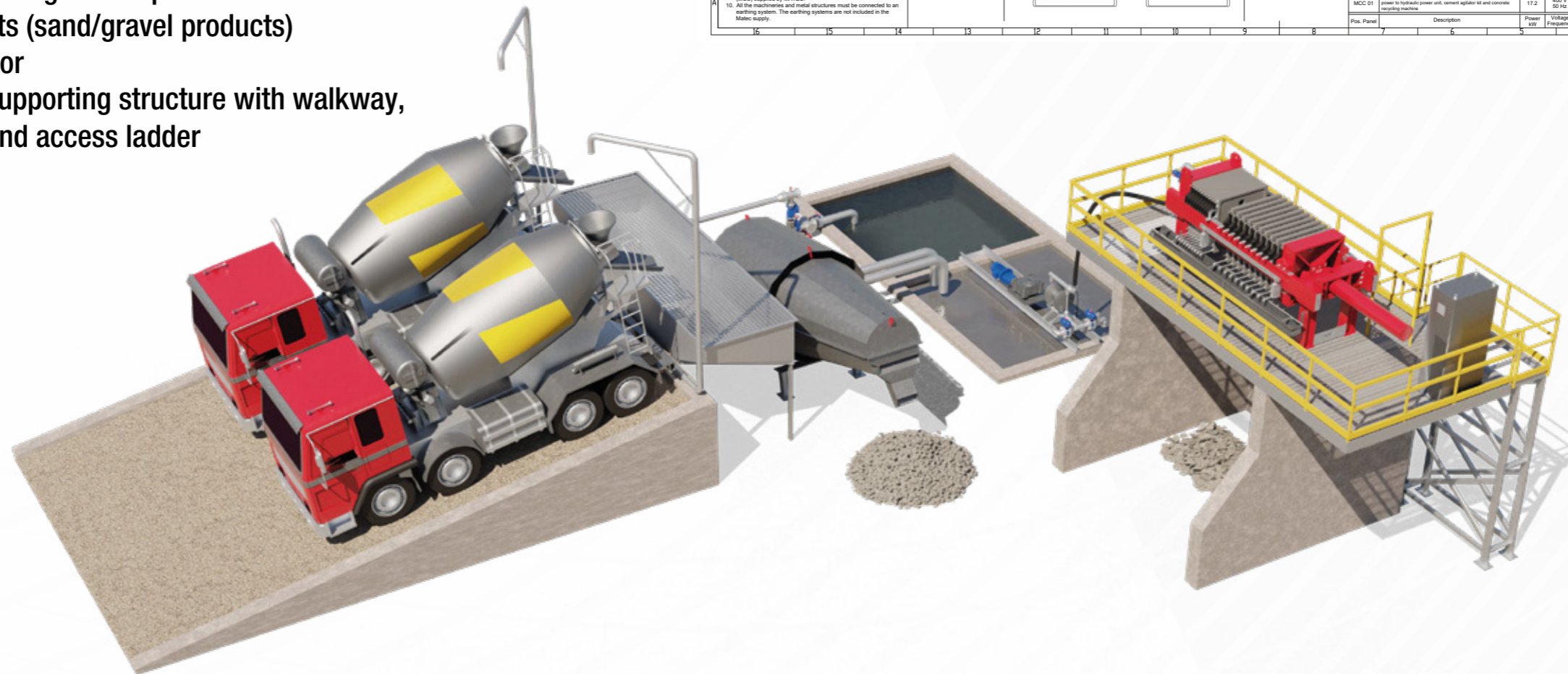
LAYOUT 04

UP TO 20-25 WASHOUTS/HOUR

- Hopper 2 TRUCKS (length 6 m)
- Concrete reclaimer model BR 25
- Inground concrete pit for slurry with cement agitator kit
- Filter feeding pneumatic pump M8
- Filter Press 1000x1000 20 plates
 - Real wash - Automatic washing system for concrete
- Inground concrete pit for clean water with relaunch pump

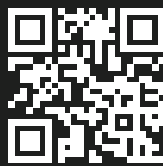
OPTIONAL

- Slurry homogenizing tank (AISI 304)
- Clean water tank (AISI 304 / PVC)
- PH Control kit
- Screen for Sand/gravel separation
- Conveyor belts (sand/gravel products)
- Air compressor
- Filter press supporting structure with walkway, handrailing and access ladder



This is a preliminary rendering and should not be considered final.

MATEC INDUSTRIES®
THE INDUSTRIAL EXCELLENCE IN ITALIAN MACHINERY BY NATURE



[MATECINDUSTRIES.COM](https://www.matecindustries.com)